

(Full  
face)

Couldn't Stand The Weather (Austin City Limits 89)

(2:22) 0m

10 12 10 ~ x 12 / x x x x x 12 10 12 ↑ 12 10 12 ~ 12 /

13 ↑ 10 13 10 12 ↑ 10 10 13 ↑ / 10 13 50 12 10 12 /

10 12 10 ~ / 12 10 12 10 12 / 10 ~ 12 10 12 / 10 (T) /

Hard 12 ↑ (13 14) 12 10 ~ / 12 10 12 / 10 10 10 10 12 /

12 ↑ 13 13 50 14 12 10 ~ / 12 10 12 ↓ 10 10 10 10 12 ↓ 10 (T) /

12 ↑ 10 10 10 13 ↑ 10 13 10 13 10 10 13 ↑ 10 (T) /

10 13 12 ↑ / 10 10 10 / 13 ↑ 10 10 /

13 10 10 (x5) 13 ↑ Full 13 ↑ 1/4 10 13 10 12 10 12 /

3m 12 12 ~ / 10 12 10 10 12 / 12 10 5 Full 9 ↑ 9 ↓ 7 9 7

12 ↑ 12 10' 12 / 12 12 10' 12 ↑ /

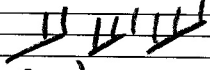
12 ↘ Full

12 ↘ 1/2

10 12 12/1212 10 12

12 12 10' 12 10' 12 ↗ Full ↗ 12 ↗ 1/2 ↗ 10 12 12

12 ↗ 12 ↗ / PB (x8) (14) ↘ (14) 12 10 12



(m)

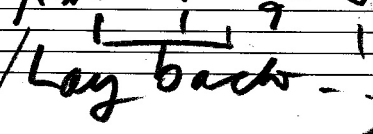
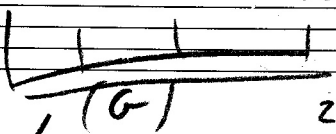
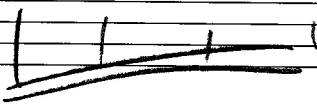


(m)

10 12 ^ 10 - 7

7 7 7

10 ↗ / 50 ↘ Full ↘ 7 7

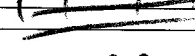
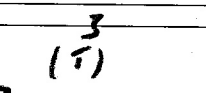


Lay back

7 9 7 8 9

5

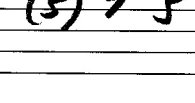
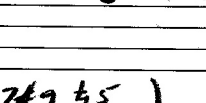
5 ↗ 3 3 3 6 ↗



3 6 3 6

3 3 6 ↗

3 2 50 1 2



(F#7#9 45)

(4x) 0~

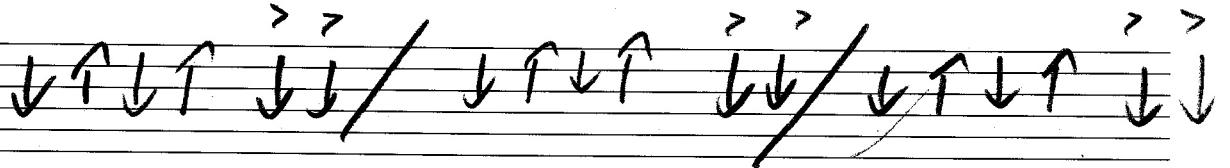
5 3 5 /

9 10 9 8 ↗ ↗ ↘ ↗

(0)

07#9#5

17  
17 18  
17 16  
x



20 ↗

PB 22

PB 22

